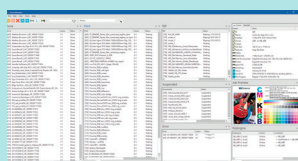


# POWERFUL AND INTUITIVE RIP SOFTWARE



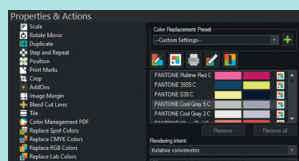
Developed to perfectly integrate with several Roland printers, the Ergosoft Roland DG Edition 3 RIP combines intuitive image editing and print output tools with extensive color reproduction and enhanced workflow operations. This powerful RIP package, based on Aurelon PDF engine, includes all the necessary features to streamline your production, letting you to take on multiple print jobs with minimum waste and maximum results. Furthermore, Ergosoft Roland DG Edition 3 has a very intuitive user interface, with all the functions easily accessible, that maximizes the efficiency of your printing workflow.

Visit [www.rolanddg.eu](http://www.rolanddg.eu)  
for further information



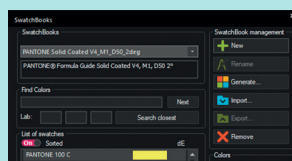
## CONTROL CENTER. INTUITIVE USER INTERFACE

Access icons categorized by the major functions of JobComposer, Queues, QueueManager and HotFolder are now placed together in a new ControlCenter, giving users quick and easy access to the specific screens they wish to use.



## SWATCHMATCHER. MINIMIZING COLOUR DIFFERENCES

A Target Printer Simulation function is newly developed to help produce the same colours when using multiple printers with different types of ink or printing modes. To reproduce the same colours, a new SwatchMatcher Function generates a spot colour library based on measurements of spot colours from other printers.



## SWATCHBOOKS. QUICKLY REPRODUCE DESIRED COLOURS

Ergosoft Roland DG Edition 3 enhances search capability, for example finding the closest colour within the colour list of SwatchBooks including PANTONE® libraries by entering a Lab colour value. Delta E predictions are also shown in the colour list of SwatchBooks.

## Ergosoft Roland DG Edition 3

### THREE PACKAGES AVAILABLE

**Ergosoft Roland DG Edition 3 (Standard)** - Bundled with Texart printers RT-640, RT-640M and XT-640. **Ergosoft Roland DG Edition 3 PLUS** - Supports all standard Roland devices level 1, 2, 3 and level 4. **Ergosoft Roland DG Edition 3 SPECIAL PLUS** - Supports RF-640 8C, EJ-640 DECO, VS-300iS-GO, ZT-1900, IU-1000F, XT-640S.



SUPPORTS ALL TEXART DEVICES



SPECIAL XT-640S DRIVER INCLUDED



SUPPORTS ALL ROLAND PRINTING DEVICES

#### Features Summary and Comparison Vs Previous Editions

Features	Roland DG Edition	Roland DG Edition 2	Roland DG Edition 3
ControlCenter	-	-	Included
Job Composer	Included	Included	Enhanced
QueueManager	-	-	Included
Smart Fill	-	Included	Included
Rectangular Image Nesting	-	Included	Enhanced
Image Add-Ons	Included (Basic)	Included	Enhanced
Colorbooks	Optional	Included	Enhanced
Color Replacement	Included (PDF/EPS)	Included (PDF/EPS/TIFF/PSD)	Enhanced (PDF/EPS/TIFF/PSD)
Target Printer Simulation	-	-	Included
SwatchMatcher	-	-	Included
Job Presets	-	-	Included
Hot Folder	Optional	Included	Enhanced
Cut Basic	Optional	Included	Included
Simultaneous RIP Jobs	1	8	8
Step & Repeat	Included (TIFF)	Included (PDF/EPS/TIFF)	Included (PDF/EPS/TIFF/PSD)
Printer Pools	-	Included	Included
SystemGuard	-	-	Included

#### Ergosoft Roland DG Edition 3 – Minimum System Requirements

Operating system	Windows® 10 (32/64-bit)
CPU	Intel Core i7-7700K (4.2 GHz) Socket 1151 or faster
RAM	8GB or more recommended on 32-Bit - 16GB or more recommended on 64-Bit
Video card and monitor	Display resolution of 1600 x 900 or higher recommended
Free hard-disk space	2 Solid State Disks (SSD) recommended. 512 GB to run the program installation 512 GB to store ripped data and spooling data

Gigabit Network Card Adapter and USB port suggested.  
Internet access is required to activate the license.

Roland DG reserves the right to make changes in specifications, materials or accessories without notice. Actual output may vary. For optimum output quality, periodic maintenance to critical components may be required. Please contact your Roland DG dealer for details. No guarantee or warranty is implied other than expressly stated. Roland DG shall not be liable for any incidental or consequential damages, whether foreseeable or not, caused by defects in such products. PANTONE® is the property of Pantone LLC. All other trademarks are the property of their respective owners. Reproduction or use of copyrighted material is governed by local, national, and international laws. Customers are responsible for observing all applicable laws and are liable for any infringement. Roland DG Corporation has licensed the MMP technology from the TPL Group.